

# Education Data Management Architecture and Best Practices for K-12 Education



- How well does your learning organization's Data Management Architecture (DMA) support increased student achievement?
- Are stakeholders at all levels (administrators, teachers, students, and parents) actively engaged in making data used and useful?
- Are your administrative systems, instructional applications and utilization of social media safe, secure, private and monitored?

*Aligning Leadership, Learning and Technology for Nearly Three Decades*

## CELT's Approach to Education Data Management Architecture

Our professional services ensure that learner-centered data is valid, reliable, interoperable, and widely used to increase student achievement, inform instructional needs, enhance staff productivity and improve learning opportunities for both students and staff. CELT can help your organization to:

- Assess and evaluate current administrative systems and data management programs
- Conduct an analysis of your organization's current and future data management needs
- Share research and best practices about making data useful and used at all levels of a learning organization
- Build an integrated and enterprise-wide Data Management Architecture

- Identify diverse and sustainable funding sources and organizational models
- Assist with the procurement and implementation of data management solutions
- Monitor, support, and upgrade your data management components and/or systems

As an unbiased trusted advisor and national thought leader, CELT will work collaboratively with your executive leadership team, IT staff, administrative systems providers, data management vendors, school principals, and classroom teachers to create a sustainable, student-centered and data-driven culture within your learning organization. We will help make the attainment of your organization's vision, mission, and goals a reality!

### CELT's Approach to Education Data Management ... is focused on helping you design solutions that are:

- Learner centered
- Instructionally focused
- Performance oriented
- Data driven
- User friendly
- Fiscally affordable

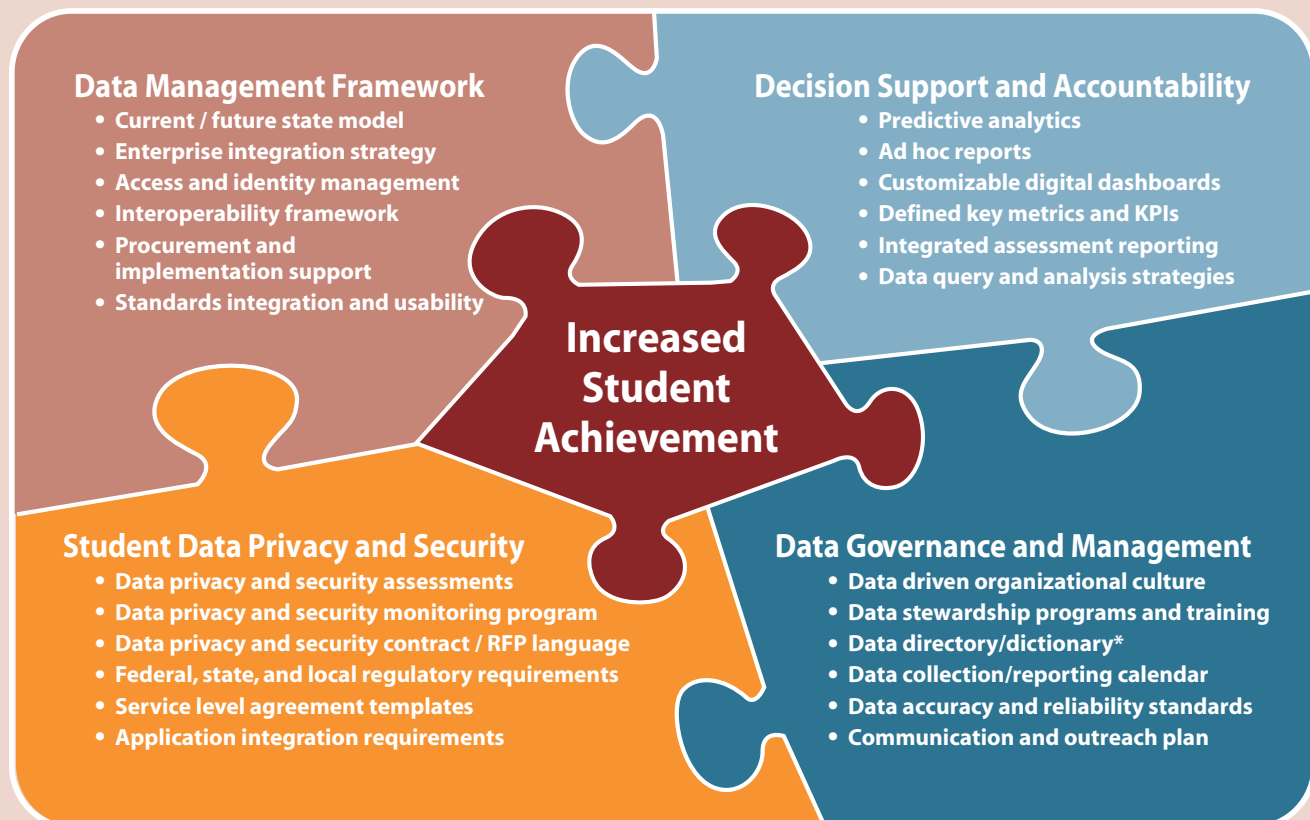


## CELT's Education Data Management Architecture Services

CELT's Education Data Management Architecture services focus on applying our proven solution-oriented professional services approach to your learning organization's data management needs. CELT approaches this work in a vendor independent, timely way based on our nearly 25 years of research and best practices in education at all levels....from the federal government, state education agencies, school districts, public/private schools, classroom and the home. Our education data management effort centers on the following four primary focus areas:

- ◆ **Data Governance and Management** — How your data is defined, owned, maintained, sustained and updated
- ◆ **Student Data Privacy and Security** — How your information is protected, secured and monitored
- ◆ **Decision Support and Accountability** — How your information and knowledge is displayed, disseminated and used to guide learning
- ◆ **Data Management Framework** — How your data systems, administrative applications, data integration activities and management strategies are defined, procured and inter-operate

*The following graphic outlines some of the services that are available within each focus area:*



\* Such as Common Education Data Standards

# Qualifications of CELT's Education Data Management Architecture Service

Since 1991, CELT has worked with thousands of learning organizations on information technology planning, data systems integration, procurement assistance, and implementation and integration support. As a result CELT is uniquely qualified to help your learning organization with a myriad of education data management initiatives.

- CELT staff are educators who know educators who know technology and technologists who know education
- CELT's extensive national field work at the national, state, local and school level keeps us apprised of the latest systems and processes in support of increased student achievement and enhanced staff productivity
- CELT has deep and meaningful experience in developing total cost of ownership models, as well as developing funding and fiscal sustainability strategies

## About CELT

For nearly three decades, CELT has helped education leaders align their use of information technology with improved student learning. CELT works collaboratively with educational organizations to support and transform 21st century teaching, learning, and administrative processes in order to ensure widespread and productive use of technology. CELT is one of the largest and most comprehensive providers of research and planning services for schools, education service agencies, and departments of education. CELT's mission is to help learning organizations attain their vision, mission, and goals by integrating high-quality, mission critical technology programs and services with the organization's people and processes in the most timely, efficient, and cost-effective way possible.



**For more information, please  
contact David Krongard**

Telephone: **508-624-4474**  
E-mail: **[dkrongard@celt.org](mailto:dkrongard@celt.org)**

Please visit [www.celt.org](http://www.celt.org) for additional information on CELT's Corporate Capabilities, Information Technology Planning, Administrative Systems Procurement and Implementation, Support, Web-hosted Managed Services, and More!



Center for Educational Leadership and Technology  
65 West Boston Post Road  
Marlborough, MA 01752  
508.624.4474  
**[www.celt.org](http://www.celt.org)**